



Missouri
CHAPTER



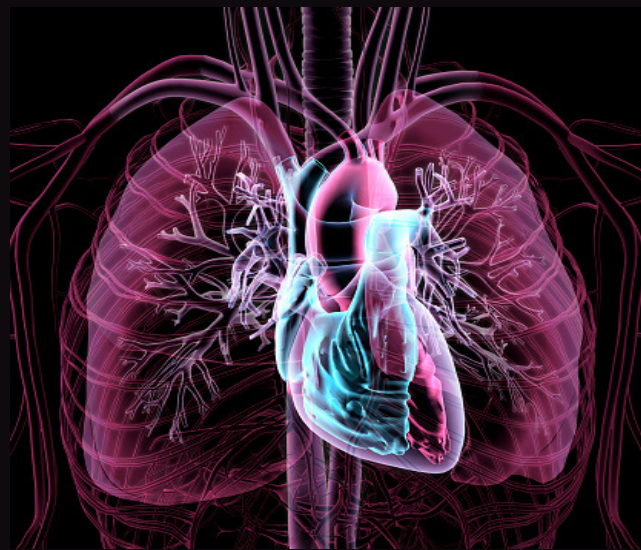
AMERICAN
COLLEGE of
CARDIOLOGY

ANNUAL UPDATE IN CARDIOVASCULAR DISEASES SATURDAY, NOVEMBER 12, 2022 ST. LOUIS, MO

EDUCATION GEARED TO THE ENTIRE CARDIOVASCULAR CARE TEAM

5.25 AMA PRA CATEGORY I CREDIT(S)[™], 5.25 ABIM MEDICAL KNOWLEDGE MOC POINTS (MOC),

5.25 CLINICAL NURSING EDUCATION CONTACT HOURS (CNE), 5.25 PHARMACOTHERAPEUTIC NURSING CONTACT HOURS (CNERx), 4.92 CONTACT HOURS OF THE ACCREDITATION COUNCIL FOR PHARMACY EDUCATION (CPE)

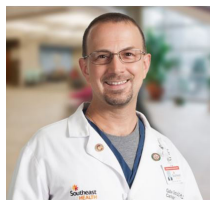


KEYNOTE SPEAKER:
MARY NORINE (MINNOW) WALSH, M.D., MACC

PROGRAM CHAIRS:
KATHRYN LINDLEY, M.D., FACC
TAISHI HIRAI, M.D., FACC

JOINTLY PROVIDED BY:
THE AMERICAN COLLEGE OF CARDIOLOGY FOUNDATION
AND THE MISSOURI CHAPTER OF THE AMERICAN COLLEGE OF CARDIOLOGY

AN INVITATION TO OUR COLLEAGUES



Gabriel Soto, M.D., Ph.D., FACC, FHRS
Missouri ACC Chapter President;
Member, ACC Board of Governors;
SoutheastHEALTH, Cape Girardeau, MO

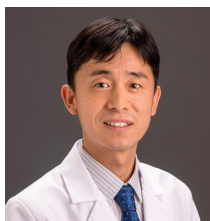
Kathryn Lindley, M.D., FACC

Missouri ACC Council Member;
Annual Scientific Session Program Chair;
Vanderbilt University Medical Center,
Nashville, TN



Taishi Hirai, M.D., FACC

Missouri ACC Council Member;
Annual Scientific Session Program Vice
Chair; University of Missouri Columbia,
Columbia, MO



We are pleased to present the 2022 Missouri ACC Annual Update in Cardiovascular Diseases LIVE on November 12, 2022 in St. Louis, MO. This meeting will showcase the wide breadth of cardiovascular medicine that is present throughout Missouri.

We will begin the day with an ACC Update from ACC Vice President Hadley Wilson, M.D., FACC. Our keynote speaker ACC Past President, Mary Norine (Minnow) Walsh, M.D., MACC, will discuss *The Role of the Multi-Disciplinary Care Team*, followed by a patient case presentation focusing on *The Other Side of the Stethoscope and the Role of the Interdisciplinary Care Team*.

Our morning session will feature *What is New with the Revascularization, Heart Failure and Chest Pain Guidelines?* We will round out the morning with presentations from the Missouri 2021 Research Grant Recipients providing updates on their projects.

The lunch will feature a spirited Fellows In Training Jeopardy Session with participants from training programs from across the state. In addition, Fellows in Training will participate in a Walking Poster Competition.

The afternoon will feature six breakout sessions focused on a variety of topics including digital health monitoring, Athletic Heart Cardiology, Cardio-Oncology, Lipids, Peripheral Vascular Disease, and Critical Care Cardiology.

We ask that you support this very important and informative meeting.

2022 PLANNING COMMITTEE

Anastasia Armbruster, Pharm.D., FACC, BCPS
Pharmacist Planner
University of Health Sciences and Pharmacy, St. Louis, MO

Margaret Capriglione, M.S.N., ANP-BC
Nurse Planner
Barnes-Jewish Hospital
St. Louis, MO

Sandeep Gautam, M.D., M.Ph., FACC, FHRS
University of Missouri Columbia School of Medicine,
Columbia, MO

Anna Grodzinsky, M.D., FACC
Saint Luke's Mid-America Heart Institute, Kansas City, MO

Kunal Gurav, MD, FACC
ChenMed, St. Louis, MO

Mustafa Husaini, M.D., FACC
Washington University School of Medicine, St. Louis, MO

Deana Mikhalkova, M.D.
Saint Louis University School of Medicine, St. Louis, MO

Josh Mitchell, M.D., FACC
Washington University School of Medicine, St. Louis, MO

William Orr, M.D., FACC
Washington University School of Medicine, St. Louis, MO

Sridevi Reddy Pitta, M.D., FACC
University of Missouri School of Medicine, Columbia, MO

Lisa Roelle, M.M.S., PA-C
Washington University School of Medicine, St. Louis, MO

John Saxon, M.D., FACC
Saint Luke's Mid-America Heart Institute, Kansas City, MO

Toniya Singh, M.D., FACC
Saint Louis Heart and Vascular, St. Louis, MO

Gabriel Soto, M.D., Ph.D., FACC, FHRS
Southeast HEALTH
Cape Girardeau, MO

Vrinda Trivedi, M.D., FACC
University of Missouri Columbia School of Medicine,
Columbia, MO

Justin Vader, M.D., FACC
Washington University School of Medicine, St. Louis, MO

Marion Ybarra, M.D., FACC
Washington University School of Medicine, St. Louis, MO

INVITED FACULTY

Mary Norine (Minnow) Walsh, M.D., MACC
ACC Past President;
Ascension Medical Group,
Indianapolis, IN

B. Hadley Wilson, M.D., FACC, FHRS
ACC Vice President;
Sanger Heart and Vascular
Institute, Charlotte, NC

Anastasia Armbruster, Pharm.D., FACC, BCPS
University of Health Sciences
and Pharmacy, St. Louis, MO

William G. Bowen, M.D., FACC
Maryland Medical Group
St. Louis, MO

Matthew Bunte, M.D., M.S., FSVM, FSCAI, FACC
Saint Luke's Mid America
Heart Institute,
Kansas City, MO

Georges Chahoud, M.D., FACC
SSM Healthcare
St. Louis, MO

Laura Challen, Pharm.D., M.B.A., BCPS, BCACP
University of Health Sciences
and Pharmacy, St. Louis, MO

Daniel Cooper, M.D., FACC
Washington University
School of Medicine,
St. Louis, MO

Sandeep Das, M.D., FACC
Saint Louis Heart and
Vascular, St. Louis, MO

Brooke Gengler, Pharm.D., BCCP
SSM Health Saint Louis
University Hospital,
St. Louis, MO

Bria Giacomino, D.O., FACC
Washington University
School of Medicine,
St. Louis, MO

Anne Goldberg, M.D., FACC
Washington University
School of Medicine,
St. Louis, MO

Sagun Goyal, M.D., M.Sc.
SSM Health Saint Louis
University Hospital,
St. Louis, MO

Anna Grodzinsky, M.D., M.Sc., FACC
Saint Luke's Mid-America
Heart Institute,
Kansas City, MO

Kunal Gurav, M.D., FACC
ChenMed, St. Louis, MO

Chip Hayes, Pharm.D.
Saint Luke's Mid-America
Heart Institute,
Kansas City, MO

Jackee Hill
Washington University
School of Medicine,
St. Louis, MO

Taishi Hirai, M.D., FACC
University of Missouri
Columbia School of
Medicine,
Columbia, MO

Katherine Holzem, M.D., FACC
Washington University
School of Medicine,
St. Louis, MO

Kathryn Lindley, M.D., FACC
Vanderbilt University Medical
Center, Nashville, TN

Deana Mikhalkova, M.D.
SLU Care Physician Group;
Saint Louis University School
of Medicine, St. Louis, MO

Joshua Mitchell, M.D., FACC
Washington University
School of Medicine,
St. Louis, MO

James O'Keefe, M.D., FACC
St. Luke's Mid-America Heart
Institute, Kansas City, MO

William Orr, M.D., FACC
Washington University
School of Medicine,
St. Louis, MO

Edon Rabinowitz, M.D., FACC
Washington University
School of Medicine,
St. Louis, MO

Lisa Roelle, M.M.S., PA-C
Washington University
School of Medicine,
St. Louis, MO

Jennifer N. Silva, M.D., FACC
Washington University
School of Medicine,
St. Louis, MO

Toniya Singh, M.D., FACC
Saint Louis Heart and
Vascular, St. Louis, MO

Brenda Snodgrass, R.N.
University of Missouri
Columbia School of
Medicine,
Columbia, MO

Gabriel Soto, M.D., Ph.D., FACC, FHRS
Southeast HEALTH
Cape Girardeau, MO

Mary Sullivan, R.N., M.S.N., AGACNP-BC, CCRN
Barnes-Jewish Hospital,
St. Louis, MO

Chris Sumski, M.D., FACC
Washington University
School of Medicine,
St. Louis, MO

Randall Thompson, M.D., FACC
St. Luke's Mid-America Heart
Institute, Kansas City, MO

Vrinda Trivedi, M.D., FACC
University of Missouri
Columbia School of
Medicine,
Columbia, MO

Isik Turker, M.D., FACC
Washington University
School of Medicine,
St. Louis, MO

Danielle Turnbull, B.S.N., WHNP-BC
Washington University
School of Medicine,
St. Louis, MO

Amanda Verma, M.D., FACC
Washington University
School of Medicine,
St. Louis, MO

Todd Vogel, M.D., FACC
University of Missouri
Columbia School of
Medicine,
Columbia, MO

Jonathan Wolfe, M.D.
Washington University
School of Medicine, St. Louis,
MO

NOVEMBER 12, 2022 SCHEDULE

Welcome and Opening Remarks

- 7:00 A.M. Registration and Networking Breakfast
Visit with Exhibitors
- 8:00 A.M. Welcome – Kathryn Lindley, M.D., FACC
Program Chair
- 8:15 A.M. ACC Update
B. Hadley Wilson, M.D., FACC
ACC Vice President
- 8:30 A.M. Missouri ACC Update
Gabriel Soto, M.D., Ph.D., FACC, FHRS
Missouri ACC President

SESSION I. Opening General Session

Moderator: Kathryn Lindley, M.D., FACC

- 8:45 A.M. Keynote Address: The Role of the Multi-Disciplinary Care Team
Mary Norine Walsh, M.D., MACC
- 9:30 A.M. The Other Side of the Stethoscope-The Role of the Multi-Disciplinary Care Team from the Patient Perspective
- 9:45 A.M. Refreshment Break & Exhibitor Networking, Visit Posters

SESSION II. What is New in the Guidelines?

Moderator:

- 10:00 A.M. Modular Based Decision Making and How to Interpret the Guidelines
Mary Norine Walsh, M.D., MACC
- 10:10 A.M. Revascularization Guidelines
Taishi Hirai, M.D., FACC
- 10:20 A.M. Heart Failure Guidelines
Deana Mikhalkova, M.D., FACC
- 10:30 A.M. Chest Pain Guidelines
Randall Thompson, M.D., FACC
- 10:40 A.M. Refreshment Break & Exhibitor Networking
Poster Judging
William G. Bowen, M.D., FACC
Anna Grodzinsky, M.D., FACC

2021 Missouri ACC and Missouri ACC Early Career Cardiology Research Grants

11:00 A.M.

1. Quantification of debris captured using transcatheter cerebral embolic protection (TCEP) during valve in valve transcatheter aortic valve replacement (VIV TAVR) with bioprosthetic valvular fracture (BVF) presented by Chetan Huded, M.D., FACC, FSCAI
2. Defining the Protein Interactome of SVEP1, a Novel Cause of Coronary Atherosclerosis in Humans presented by Nathan Stitzel, M.D., Ph.D.
3. Identify top and bottom performing EMS agencies in survival in majority Black or Hispanic communities presented by Paul Chan, M.D., FACC
4. Develop and Launch a Registry to Follow women with a history of pregnancy complications, who are at risk for long-term cardiovascular complications presented by Valerie Rader, M.D., FACC
5. Evaluate the biomarker Growth Differentiation Factor 15 (GDF-15) in a traditionally underserved and understudied heart failure (HF) population presented by Angel Lopez-Candales, M.D., FACC, FASC and Nicholas Norgard, Pharm.D., BCPS
6. Evaluating Pediatric Physiologic Monitoring for Infants with Complex Congenital Heart Disease presented by Lori Erickson, Ph.D., R.N., M.S.N., CPNP-PC

Lunch & FIT Jeopardy

- 12:00 P.M. Lunch & Exhibitor Networking
- 12:15 P.M. FIT Jeopardy
Moderated by Kunal Gurav, M.D., FACC
and Sandeep Gautam, M.D., FACC
- 12:55 P.M. Announce Poster Winners

NOVEMBER 12, 2022 SCHEDULE

SPECIALTY SESSION I:

Track 1: Show Me Digital Health

Moderator: Jennifer Silva, M.D., FACC

- 1:00 P.M. Digital Monitoring in Pediatric Cardiology
Lisa Roelle, M.M.S., PA-C
- 1:15 P.M. Heart Failure Monitoring
Georges Chahoud, M.D., FACC
- 1:30 P.M. Remote Hypertension Monitoring
Toniya Singh, M.D., FACC
- 1:45 P.M. Panel Discussion with Danielle Turnbull, NP

Track 2: Athletic Heart Cardiology

Moderator: William Orr, M.D., FACC

- 1:00 P.M. Return to Exercise after COVID-19
Amanda Verma, M.D., FACC OR
Cardiac Remodeling in the Athlete
TBD, M.D., FACC
- 1:15 P.M. Return to Exercise After SCAD
Anna Grodzinsky, M.D., FACC
- 1:30 P.M. Shared Decision Making Approaches with
Patients
Daniel Cooper, M.D., FACC
- 1:45 P.M. Panel Discussion with Brenda Snodgrass,
R.N.

Track 3: Cardio-Oncology

Moderator: Joshua Mitchell, M.D., FACC

- 1:00 P.M. Navigating Cardio-Oncology Challenges:
A Case Based Session
Cases: Delayed Diagnosis and Recovery of
Fulminant Immune-Checkpoint Inhibitor-
Associated Myocarditis with TBD M.D.;
Cardiac Tamponade from a Hemorrhagic
Pericardial Effusion Associated with
Ibrutinib and Apixaban Drug-Drug
Interaction with Kalyan Chitturi, M.D.;
Permissive Cardiotoxicity--Safely
Continuing Patient on Cancer Therpay with
Mild LV Systolic Dysfunction, TBD, M.D.
- 1:45 P.M. Panel Discussion With Anastasia
Armbruster, Pharm.D., FACC, BCPS, Sagun
Goyal, M.D., Isik Turker, M.D.

SPECIALTY SESSION II:

Track 1: Lipids

Moderator: Anne Goldberg, M.D., FACC

- 2:00 P.M. Management of Hyperlipidemia in the
Young Patient
Chris Sumski, M.D., FACC
- 2:15 P.M. Managing Hyperlipidemia in Pregnancy
and Reproductive Aged Women
Kathryn Lindley, M.D., FACC
- 2:30 P.M. Pharmacology-What are the Newer
Drugs? How Do They Work?
Chip Hayes, Pharm.D.
- 2:45 P.M. Panel Discussion with James O'Keefe,
M.D., F.A.C.C.

Track 2: Peripheral Vascular Disease

Moderator: Katherine Holzem, M.D., FACC

- 2:00 P.M. Venous Disease
Sandeep Das, M.D., FACC
- 2:15 P.M. Updates on Treatment in PAD-
Pharmacotherapy and Interventions
Todd Vogel, M.D.
- 2:30 P.M. Population Management of Health
Disparities
Matthew Bunte, M.D., FACC
- 2:45 P.M. Panel Discussion

Track 3: Critical Care Cardiology

Moderator: Edon Rabinowitz, M.D., FACC

- 2:00 P.M. Advances in the Treatment of Acute PE
Bria Giacomino, D.O., FACC
- 2:15 P.M. Acute Hemodynamic Support in Shock
Jonathan Wolfe, M.D.
- 2:30 P.M. Evolving Role of the Critical Care
Cardiologist
Vrinda Trivedi, M.D., FACC
- 2:45 P.M. Panel Discussion with Brooke Gengler,
Pharm.D., Mary Sullivan, R.N., M.S.N.,
AGACNP-BC, CCRN
- 3:00 P.M. **Closing Remarks**
Kathryn Lindley, M.D., FACC
Taishi Hirai, M.D., FACC
- 3:15 P.M. **Women In Cardiology Meeting**

GENERAL INFORMATION

STATEMENT OF NEED

Health care in the 21st century is coming to embrace advanced technologies in an effort to shift toward more individualized, patient centered and value based approaches that will focus on quality improvement and outcomes measurements. Consequently, it is essential that cardiovascular clinicians not only understand disease and wellness states, but be able to competently and appropriately implement new diagnostic and therapeutic modalities.

OVERALL GOAL

The overall goal of this program is to help the cardiovascular clinician improve patient care and outcomes measurements. Specifically, we anticipate that cardiovascular clinicians will be able to identify knowledge and practice gaps and that the knowledge gained will result in improved clinical expertise and patient care.

TARGET AUDIENCE

This course is designed for Cardiologists, CV Surgeons, Pharmacists, Cardiovascular Physician Trainees, Internists, Primary Care Physicians, Physician Assistants, Nurse Practitioners, and other health care providers.

GRANT

ACKNOWLEDGMENT

At the time of printing, a complete listing of industry supporters was not available. Appropriate acknowledgment will be made upon confirmation of support at the time of the course.

ACCREDITATION

In support of improving patient care, the American College of Cardiology Foundation (ACCF) is jointly accredited by the Accreditation Council for Continuing Medical Education (ACCME), the Accreditation Council for Pharmacy Education (ACPE), and the American Nurses Credentialing Center (ANCC) to provide continuing education for the healthcare team.



JOINTLY ACCREDITED PROVIDER™
INTERPROFESSIONAL CONTINUING EDUCATION

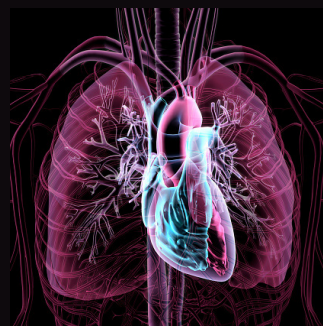
Successful completion of this CME activity, which includes participation in the evaluation component, enables the participant to earn up to 4.92 Medical Knowledge MOC points in the American Board of Internal Medicine's (ABIM) Maintenance of Certification (MOC) Program.



Participants will earn MOC points equivalent to the amount of CME credits claimed for the activity. It is the CME activity provider's responsibility to submit participant completion information to ACCME for the purpose of granting ABIM MOC credit.

The ACCF designates this live educational activity for a maximum of 4.92 AMA PRA Category I Credit(s)™, 4.92 ABIM Medical Knowledge MOC Points (MOC), 4.92 Clinical Nursing Education Contact Hours (CNE), 4.92 Pharmacotherapeutic Nursing Contact Hours (CNERx), and 4.92 Contact Hours of the Accreditation Council for Pharmacy Education (CPE)

Physicians, nurses and pharmacists should claim only the credit commensurate with the extent of their participation in the activity.



GENERAL INFORMATION

DISCLAIMER

Abstracts and articles contained in this course guide have been reprinted with permission. This information is provided for general medical education purposes only and is not meant to substitute for the independent medical judgment of a clinician relative to diagnostic and treatment options for a specific patient's medical condition. The American College of Cardiology Foundation (ACCF) does not warrant the completeness, accuracy or usefulness of any opinions, advice, services or other information provided through this activity. In no event will ACCF be liable for any decision made, or action taken, in reliance upon the information provided through this activity. Accredited status does not imply endorsement by ACC of any commercial products displayed in conjunction with this activity. ACCF reserves the right to modify faculty and program without notice.

DISCLOSURE INFORMATION

As a provider jointly accredited by the Accreditation Council for Continuing Medical Education (ACCME), the Accreditation Council for Pharmacy Education (ACPE), and the American Nurses Credentialing Center (ANCC), the American College of Cardiology Foundation (ACCF) must ensure balance, independence, objectivity, and scientific rigor in all of their directly provided or jointly provided/co-provided educational activities. Planners, presenters, and other contributors, in a position to control the content are required to disclose to the audience all relevant financial relationships he/she and/or his/her spouse or domestic partner may have, occurring within the past 24 months, with any entity producing, marketing, re-selling, or distributing health care goods or services consumed by, or used on, patients. When an unlabeled use of a commercial product or an investigational use not yet approved for any purpose is discussed during an educational activity, the contributor should disclose that the product is not labeled for the use under discussion or that the product is still investigational.

ACCF is committed to providing its learners with high-quality activities and materials that promote improvements and quality in health care and not a specific proprietary business or commercial interest. The intent of this disclosure is not to prevent participation in educational activities by persons with a financial or other relationship, but rather to provide learners with information on which they can make their own determination whether financial interests or relationships may influence the education activity.

ACCF assesses conflicts of interest (COI) with its faculty, planners, managers, staff, and other individuals who are in a position to control the content of certified activities. All relevant potential conflicts of interest that are identified are thoroughly vetted by course directors, ACCF education staff, and members of the Accreditation Compliance Workgroup (ACWG) through a process that includes appropriate peer review for fair balance, scientific objectivity and validity, and patient care and safety recommendations.

LEARNING OBJECTIVES:

- Discuss the role of the multi-disciplinary care team and the impact on quality cardiovascular patient care.
- Be familiar with current guidelines used in the diagnosis and management of revascularization, heart failure and chest pain.
- Discuss factors in selecting and using medications effectively in cardiovascular patients.
- Be able to identify and discuss a variety of patient care strategies, including pharmacologic, in the management of patients with various disease states and conditions.

THANK YOU TO OUR HOSPITAL SPONSORS

2022 HOSPITAL SPONSORS



Heart & Vascular Center



NATIONAL LEADERS IN MEDICINE



www.MOACC.org

REGISTRATION

LOCATION

St. Charles Convention Center
1 Convention Center Plaza
St. Charles, MO 63303

HOTEL INFORMATION

Embassy Suites St. Charles
2 Convention Center Plaza
St. Charles, MO 63303
Phone 636-946-5544
Rate: \$189.00, Group Name: American College of
Cardiology Missouri Chapter

REGISTRATION/PAYMENT POLICY

Your full payment in advance completes your registration and ensures enrollment in this course. If you have not received an acknowledgment within two weeks of your registration submission, please contact us at (314) 416-2275. Opportunities for on-site registration are limited, and may be unavailable. To inquire about the ability to register on-site, please contact us at (314) 416-2275.

TO REGISTER

Online: Secure online registration is available at www.moacc.org

CANCELLATIONS

Course registration fee less \$25 administrative charge is refundable if cancellation is received in writing by October 21, 2022.

SPECIAL NEEDS

The ACC Missouri Chapter fully complies with the legal requirements of the Americans with Disabilities Act rules and regulations thereof. If any participant of this meeting is in need of accommodations, please do not hesitate to submit written requests at least one month prior to the course date.

FOR FURTHER COURSE INFORMATION

ACC Missouri Chapter, Beth Quick-Andrews, CAE
P: (314) 416-2275 F: (314) 845-1891
e-mail: MOACC@qabs.com

First Name Initial Last Name Degree

Address

City State Zip

Office Telephone Number Fax

E-Mail Address

License #

FEES

ACC Members

____ Physician: \$99 ____ CV Care Team Members: \$60

Non ACC Members

____ Physician: \$149 ____ CV Care Team Members: \$85

Fees include enrollment, continuing education credits, educational materials, continental breakfast, refreshment breaks, and lunch. If your hospital is sponsoring the meeting, please register with your complimentary meeting code:

Cardiology Fellows may attend course at no charge.

Please email a letter from Fellowship Training Director indicating status as trainee to moacc@qabs.com

PAYMENT INFORMATION

____ Check Enclosed

(Circle One) Mastercard Visa Discover

AmEx

Name on Card: _____

Card #: _____

Exp. Date: _____ Billing Zip Code: _____

Signature: _____