



Missouri  
CHAPTER



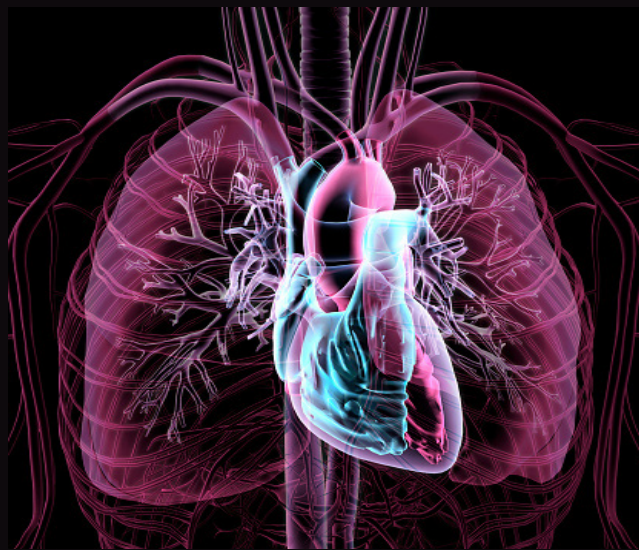
AMERICAN  
COLLEGE of  
CARDIOLOGY

# ANNUAL UPDATE IN CARDIOVASCULAR DISEASES SATURDAY, NOVEMBER 12, 2022 ST. LOUIS, MO

EDUCATION GEARED TO THE ENTIRE CARDIOVASCULAR CARE TEAM

5.25 AMA PRA CATEGORY I CREDIT(s)<sup>™</sup>, 5.25 ABIM MEDICAL KNOWLEDGE MOC POINTS (MOC),

5.25 CLINICAL NURSING EDUCATION CONTACT HOURS (CNE), 5.25 PHARMACOTHERAPEUTIC NURSING CONTACT HOURS (CNERx), 5.25 CONTACT HOURS OF THE ACCREDITATION COUNCIL FOR PHARMACY EDUCATION (CPE)



KEYNOTE SPEAKER:  
MARY NORINE (MINNOW) WALSH, M.D., MACC

PROGRAM CHAIRS:  
KATHRYN LINDLEY, M.D., FACC  
TAISHI HIRAI, M.D., FACC

JOINTLY PROVIDED BY:  
THE AMERICAN COLLEGE OF CARDIOLOGY FOUNDATION  
AND THE MISSOURI CHAPTER OF THE AMERICAN COLLEGE OF CARDIOLOGY

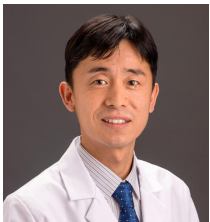
# AN INVITATION TO OUR COLLEAGUES



**Gabriel Soto, M.D., Ph.D., FACC, FHRS**  
Missouri ACC Chapter President;  
Member, ACC Board of Governors;  
SoutheastHEALTH, Cape Girardeau, MO

**Kathryn Lindley, M.D., FACC**

Missouri ACC Council Member;  
Annual Scientific Session Program Chair;  
Vanderbilt University Medical Center,  
Nashville, TN



**Taishi Hirai, M.D., FACC**  
Missouri ACC Council Member;  
Annual Scientific Session Program Vice  
Chair; University of Missouri Columbia,  
Columbia, MO

We are pleased to present the 2022 Missouri ACC Annual Update in Cardiovascular Diseases LIVE on November 12, 2022 in St. Louis, MO. This meeting will showcase the wide breadth of cardiovascular medicine that is present throughout Missouri.

We will begin the day with an ACC Update from ACC Vice President Hadley Wilson, M.D., FACC. Our keynote speaker ACC Past President, Mary Norine (Minnow) Walsh, M.D., MACC, will discuss *The Role of the Multi-Disciplinary Care Team*, followed by a patient case presentation focusing on *The Other Side of the Stethoscope and the Role of the Interdisciplinary Care Team*.

Our morning session will feature *What is New with the Revascularization, Heart Failure and Chest Pain Guidelines?* We will round out the morning with presentations from the Missouri 2021 Research Grant Recipients providing updates on their projects.

The lunch will feature a spirited Fellows In Training Jeopardy Session with participants from training programs from across the state. In addition, Fellows in Training will participate in a Walking Poster Competition.

The afternoon will feature six breakout sessions focused on a variety of topics including digital health monitoring, Athletic Heart Cardiology, Cardio-Oncology, Lipids, Peripheral Vascular Disease, and Critical Care Cardiology.

We ask that you support this very important and informative meeting.

## 2022 PLANNING COMMITTEE

**Anastasia Armbruster, Pharm.D., FACC, BCPS**  
Pharmacist Planner  
University of Health Sciences and Pharmacy, St. Louis, MO

**Margaret Capriglione, M.S.N., ANP-BC**  
Nurse Planner  
Barnes-Jewish Hospital  
St. Louis, MO

**Sandeep Gautam, M.D., M.Ph., FACC, FHRS**  
University of Missouri Columbia School of Medicine,  
Columbia, MO

**Anna Grodzinsky, M.D., FACC**  
Saint Luke's Mid-America Heart Institute, Kansas City, MO

**Kunal Gurav, MD, FACC**  
ChenMed, St. Louis, MO

**Mustafa Husaini, M.D., FACC**  
Washington University School of Medicine, St. Louis, MO

**Deana Mikhalkova, M.D.**  
Saint Louis University School of Medicine, St. Louis, MO

**Josh Mitchell, M.D., FACC**  
Washington University School of Medicine, St. Louis, MO

**William Orr, M.D., FACC**  
Washington University School of Medicine, St. Louis, MO

**Sridevi Reddy Pitta, M.D., FACC**  
University of Missouri School of Medicine, Columbia, MO

**Lisa Roelle, M.M.S., PA-C**  
Washington University School of Medicine, St. Louis, MO

**John Saxon, M.D., FACC**  
Saint Luke's Mid-America Heart Institute, Kansas City, MO

**Toniya Singh, M.D., FACC**  
Saint Louis Heart and Vascular, St. Louis, MO

**Gabriel Soto, M.D., Ph.D., FACC, FHRS**  
Southeast HEALTH  
Cape Girardeau, MO

**Vrinda Trivedi, M.D., FACC**  
University of Missouri Columbia School of Medicine,  
Columbia, MO

**Justin Vader, M.D., FACC**  
Washington University School of Medicine, St. Louis, MO

**Marion Ybarra, M.D., FACC**  
Washington University School of Medicine, St. Louis, MO

# INVITED FACULTY

**Mary Norine (Minnow) Walsh, M.D., MACC**  
ACC Past President;  
Ascension Medical Group,  
Indianapolis, IN

**B. Hadley Wilson, M.D., FACC, FHRS**  
ACC Vice President;  
Sanger Heart and Vascular  
Institute, Charlotte, NC

**Anastasia Armbruster, Pharm.D., FACC, BCPS**  
University of Health Sciences  
and Pharmacy, St. Louis, MO

**Mariam Baig, M.D., FACC**  
SLUCare, St. Louis, MO

**William G. Bowen, M.D., FACC**  
Maryland Medical Group  
St. Louis, MO

**Georges Chahoud, M.D., FACC**  
SSM Healthcare, St. Louis, MO

**Laura Challen, Pharm.D., M.B.A., BCPS, BCACP**  
University of Health Sciences  
and Pharmacy, St. Louis, MO

**Paul Chan, M.D. FACC**  
Saint Luke's Mid-America Heart  
Institute, Kansas City, MO

**Kalyan Chitturi, M.D.**  
University of Missouri Columbia  
School of Medicine,  
Columbia, MO

**Sandeep Das, M.D., FACC**  
Saint Louis Heart and Vascular,  
St. Louis, MO

**Lori Erickson, Ph.D., RN, CPNP-PC**  
Children's Mercy Hospital,  
Kansas City, MO

**Brooke Gengler, Pharm.D., BCCP**  
SSM Health Saint Louis  
University Hospital,  
St. Louis, MO

**Bria Giacomino, D.O., FACC**  
Washington University School of  
Medicine, St. Louis, MO

**Anne Goldberg, M.D.**  
Washington University School of  
Medicine, St. Louis, MO

**Sagun Goyal, M.D., M.Sc.**  
SSM Health Saint Louis  
University Hospital,  
St. Louis, MO

**Anna Grodzinsky, M.D., M.Sc., FACC**  
Saint Luke's Mid-America Heart  
Institute, Kansas City, MO

**Kunal Gurav, M.D., FACC**  
ChenMed, St. Louis, MO

**Charles "Chip" Hayes, Pharm.D., BCPS, BCCP**  
Saint Luke's Mid-America Heart  
Institute, Kansas City, MO

**Taishi Hirai, M.D., FACC**  
University of Missouri Columbia  
School of Medicine,  
Columbia, MO

**Katherine Holzem, M.D., FACC**  
Washington University School of  
Medicine, St. Louis, MO

**Chetan Huded, M.D. FACC.**  
Saint Luke's Mid-America Heart  
Institute, Kansas City, MO

**Farhan Katchi, M.D., FACC**  
Washington University School of  
Medicine, St. Louis, MO

**Kathryn Lindley, M.D., FACC**  
Vanderbilt University Medical  
Center, Nashville, TN

**Deana Mikhalkova, M.D.**  
SLU Care Physician Group; Saint  
Louis University School of  
Medicine, St. Louis, MO

**Joshua Mitchell, M.D., FACC**  
Washington University School of  
Medicine, St. Louis, MO

**William Orr, M.D., FACC**  
Washington University School of  
Medicine, St. Louis, MO

**Linda Peterson, M.D., FACC**  
Washington University School of  
Medicine, St. Louis, MO

**Syed Qamer, M.D.**  
Washington University School of  
Medicine, St. Louis, MO

**Edon Rabinowitz, M.D., FACC**  
Washington University School of  
Medicine, St. Louis, MO

**Valerie Rader, M.D. FACC**  
Saint Luke's Mid-America Heart  
Institute, Kansas City, MO

**Lisa Roelle, M.M.S., PA-C**  
Washington University School of  
Medicine, St. Louis, MO

**Eileen Sackett**  
Patient, St. Louis, MO

**David Schwartz, M.D., Ph.D., FACC**  
Washington University School of  
Medicine, St. Louis, MO

**Jennifer N. Silva, M.D., FACC**  
Washington University School of  
Medicine, St. Louis, MO

**Toniya Singh, M.D., FACC**  
Saint Louis Heart and Vascular,  
St. Louis, MO

**Brenda Snodgrass, R.N.**  
University of Missouri Columbia  
School of Medicine,  
Columbia, MO

**Gabriel Soto, M.D., Ph.D., FACC, FHRS**  
Southeast HEALTH  
Cape Girardeau, MO

**Nathan Stitzel, M.D., Ph.D.**  
Washington University School of  
Medicine, St. Louis, MO

**Mary Sullivan, R.N., M.S.N., AGACNP-BC, CCRN**  
Barnes-Jewish Hospital,  
St. Louis, MO

**Chris Sumski, M.D., FACC**  
Washington University School of  
Medicine, St. Louis, MO

**Vrinda Trivedi, M.D., FACC**  
University of Missouri Columbia  
School of Medicine,  
Columbia, MO

**Isik Turker, M.D., FACC**  
Washington University School of  
Medicine, St. Louis, MO

**Danielle Turnbull, B.S.N., WHNP-BC**  
Washington University School of  
Medicine,  
St. Louis, MO

**Deepthi Vodnala, M.D., FACC**  
Saint Luke's Mid-America Heart  
Institute, Kansas City, MO

**Todd Vogel, M.D., FACC**  
University of Missouri Columbia  
School of Medicine,  
Columbia, MO

**Jonathan Wolfe, M.D.**  
Washington University School of  
Medicine, St. Louis, MO

# NOVEMBER 12, 2022 SCHEDULE

## Welcome and Opening Remarks

- 7:00 A.M. Registration and Networking Breakfast  
Visit with Exhibitors
- 8:00 A.M. Welcome – Kathryn Lindley, M.D., FACC  
Program Chair
- 8:15 A.M. ACC Update  
B. Hadley Wilson, M.D., FACC  
ACC Vice President
- 8:30 A.M. Missouri ACC Update  
Gabriel Soto, M.D., Ph.D., FACC, FHRS  
Missouri ACC President

## SESSION I. Opening General Session

### Moderator: Kathryn Lindley, M.D., FACC

- 8:45 A.M. Keynote Address: The Role of the Multi-Disciplinary Care Team  
Mary Norine Walsh, M.D., MACC
- 9:30 A.M. The Other Side of the Stethoscope-The Role of the Multi-Disciplinary Care Team from the Patient Perspective with Eileen Sackett
- 9:45 A.M. Refreshment Break & Exhibitor Networking, Visit Posters

## SESSION II. What is New in the Guidelines?

### Moderator: Kathryn Lindley, M.D., FACC

- 10:00 A.M. Modular Based Decision Making and How to Interpret the Guidelines  
Mary Norine Walsh, M.D., MACC
- 10:10 A.M. Revascularization Guidelines  
Taishi Hirai, M.D., FACC
- 10:20 A.M. Heart Failure Guidelines  
Deana Mikhalkova, M.D., FACC
- 10:30 A.M. Chest Pain Guidelines  
**Farhan Katchi, M.D., FACC**
- 10:40 A.M. Refreshment Break & Exhibitor Networking  
Poster Judging  
William G. Bowen, M.D., FACC  
Anna Grodzinsky, M.D., FACC

## 2021 Missouri ACC and Missouri ACC Early Career Cardiology Research Grants

11:00 A.M.

1. Quantification of debris captured using transcatheter cerebral embolic protection (TCEP) during valve in valve transcatheter aortic valve replacement (VIV TAVR) with bioprosthetic valvular fracture (BVF) presented by Chetan Huded, M.D., FACC, FSCAI
2. Defining the Protein Interactome of SVEP1, a Novel Cause of Coronary Atherosclerosis in Humans presented by Nathan Stitzel, M.D., Ph.D.
3. Identify top and bottom performing EMS agencies in survival in majority Black or Hispanic communities presented by Paul Chan, M.D., FACC
4. Develop and Launch a Registry to Follow women with a history of pregnancy complications, who are at risk for long-term cardiovascular complications presented by Valerie Rader, M.D., FACC
5. Evaluating Pediatric Physiologic Monitoring for Infants with Complex Congenital Heart Disease presented by Lori Erickson, Ph.D., R.N., M.S.N., CPNP-PC

## Lunch & FIT Jeopardy

- 12:00 P.M. Lunch & Exhibitor Networking
- 12:15 P.M. FIT Jeopardy  
Moderated by Kunal Gurav, M.D., FACC  
and Sandeep Gautam, M.D., FACC
- 12:55 P.M. Announce Poster Winners

# NOVEMBER 12, 2022 SCHEDULE

## SPECIALTY SESSION I:

### Track 1: Show Me Digital Health

**Moderator: Jennifer Silva, M.D., FACC**

- 1:00 P.M. Digital Monitoring in Pediatric Cardiology  
Lisa Roelle, M.M.S., PA-C
- 1:15 P.M. Heart Failure Monitoring  
Georges Chahoud, M.D., FACC
- 1:30 P.M. Remote Hypertension Monitoring  
Toniya Singh, M.D., FACC
- 1:45 P.M. Panel Discussion with Danielle Turnbull, NP; Laura Challen, Pharm.D., MBA, BCPS, BCACP

### Track 2: Athletic Heart Cardiology

**Moderator: William Orr, M.D., FACC**

- 1:00 P.M. Return to Exercise after COVID-19  
David Schwartz, M.D., Ph.D., FACC
- 1:15 P.M. Return to Exercise After SCAD  
Anna Grodzinsky, M.D., FACC
- 1:30 P.M. Intensive Cardiac Rehab  
Linda Peterson, M.D., FACC
- 1:45 P.M. Panel Discussion with Brenda Snodgrass, R.N.

### Track 3: Cardio-Oncology Challenges and Educational Pearls: A Case-Based Session

**Moderator: Joshua Mitchell, M.D., FACC**

Panel Discussion with Anastasia Armbruster, Pharm.D., FACC, BCPS, Sagun Goyal, M.D., Isik Turker, M.D.; Deepthi Vodnala, M.D.

- 1:00 P.M. Delayed Diagnosis of Immunotherapy Associated Myocarditis with Syed Qamer, M.D.;
- 1:15 P.M. Hemorrhagic Cardiac Tamponade on Ibrutinib with Kalyan Chitturi, D.O.;
- 1:30 P.M. Management of 5-FU Induced Coronary Vasospasm with Deepthi Vodnala, M.D.
- 1:45 P.M. Diagnostic Challenges in Amyloidosis with Mariam Baig, M.D.

## SPECIALTY SESSION II:

### Track 1: Lipids

**Moderator: Anne Goldberg, M.D.**

- 2:00 P.M. Management of Hyperlipidemia in the Young Patient  
Chris Sumski, M.D., FACC
- 2:15 P.M. Managing Hyperlipidemia in Pregnancy and Reproductive Aged Women  
Kathryn Lindley, M.D., FACC
- 2:30 P.M. Pharmacology-What are the Newer Drugs? How Do They Work?  
Charles "Chip" Hayes, Pharm.D., BCPS, BCCP
- 2:45 P.M. Panel Discussion

### Track 2: Peripheral Vascular Disease

**Moderator: Katherine Holzem, M.D., FACC**

- 2:00 P.M. Venous Disease  
Sandeep Das, M.D., FACC
- 2:25 P.M. Updates on Treatment in PAD- Pharmacotherapy and Interventions  
Todd Vogel, M.D.
- 2:50 P.M. Panel Discussion

### Track 3: Critical Care Cardiology

**Moderator: Edon Rabinowitz, M.D., FACC**

- 2:00 P.M. Advances in the Treatment of Acute PE  
Bria Giacomino, D.O., FACC
- 2:15 P.M. Acute Hemodynamic Support in Shock  
Jonathan Wolfe, M.D.
- 2:30 P.M. Evolving Role of the Critical Care Cardiologist  
Vrinda Trivedi, M.D., FACC
- 2:45 P.M. Panel Discussion with Brooke Gengler, Pharm.D., Mary Sullivan, R.N., M.S.N., AGACNP-BC, CCRN

### 3:00 P.M. Closing Remarks

Kathryn Lindley, M.D., FACC  
Taishi Hirai, M.D., FACC

### 3:15 P.M. Women In Cardiology Meeting

# GENERAL INFORMATION

## STATEMENT OF NEED

Health care in the 21st century is coming to embrace advanced technologies in an effort to shift toward more individualized, patient centered and value based approaches that will focus on quality improvement and outcomes measurements. Consequently, it is essential that cardiovascular clinicians not only understand disease and wellness states, but be able to competently and appropriately implement new diagnostic and therapeutic modalities.

## OVERALL GOAL

The overall goal of this program is to help the cardiovascular clinician improve patient care and outcomes measurements. Specifically, we anticipate that cardiovascular clinicians will be able to identify knowledge and practice gaps and that the knowledge gained will result in improved clinical expertise and patient care.

## TARGET AUDIENCE

This course is designed for Cardiologists, CV Surgeons, Pharmacists, Cardiovascular Physician Trainees, Internists, Primary Care Physicians, Physician Assistants, Nurse Practitioners, and other health care providers.

## EXHIBITOR

## ACKNOWLEDGMENT

At the time of printing, a complete listing of industry supporters was not available. Appropriate acknowledgment will be made upon confirmation of support at the time of the course.

## ACCREDITATION

In support of improving patient care, the American College of Cardiology Foundation (ACCF) is jointly accredited by the Accreditation Council for Continuing Medical Education (ACCME), the Accreditation Council for Pharmacy Education (ACPE), and the American Nurses Credentialing Center (ANCC) to provide continuing education for the healthcare team.



JOINTLY ACCREDITED PROVIDER™  
INTERPROFESSIONAL CONTINUING EDUCATION

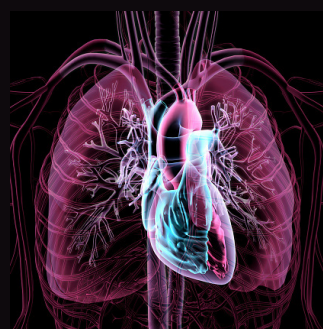
Successful completion of this CME activity, which includes participation in the evaluation component, enables the participant to earn up to 5.25 Medical Knowledge MOC points in the American Board of Internal Medicine's (ABIM) Maintenance of Certification (MOC) Program.



Participants will earn MOC points equivalent to the amount of CME credits claimed for the activity. It is the CME activity provider's responsibility to submit participant completion information to ACCME for the purpose of granting ABIM MOC credit.

The ACCF designates this live educational activity for a maximum of 5.25 AMA PRA Category I Credit(s)™, 5.25 ABIM Medical Knowledge MOC Points (MOC), 5.25 Clinical Nursing Education Contact Hours (CNE), 5.25 Pharmacotherapeutic Nursing Contact Hours (CNERx), and 5.25 Contact Hours of the Accreditation Council for Pharmacy Education (CPE).

Physicians, nurses and pharmacists should claim only the credit commensurate with the extent of their participation in the activity.



# GENERAL INFORMATION

## DISCLAIMER

Abstracts and articles contained in this course guide have been reprinted with permission. This information is provided for general medical education purposes only and is not meant to substitute for the independent medical judgment of a clinician relative to diagnostic and treatment options for a specific patient's medical condition. The American College of Cardiology Foundation (ACCF) does not warrant the completeness, accuracy or usefulness of any opinions, advice, services or other information provided through this activity. In no event will ACCF be liable for any decision made, or action taken, in reliance upon the information provided through this activity. Accredited status does not imply endorsement by ACC of any commercial products displayed in conjunction with this activity. ACCF reserves the right to modify faculty and program without notice.

## DISCLOSURE INFORMATION

As a provider jointly accredited by the Accreditation Council for Continuing Medical Education (ACCME), the Accreditation Council for Pharmacy Education (ACPE), and the American Nurses Credentialing Center (ANCC), the American College of Cardiology Foundation (ACCF) must ensure balance, independence, objectivity, and scientific rigor in all of their directly provided or jointly provided/co-provided educational activities. Planners, presenters, and other contributors, in a position to control the content are required to disclose to the audience all relevant financial relationships he/she and/or his/her spouse or domestic partner may have, occurring within the past 24 months, with any entity producing, marketing, re-selling, or distributing health care goods or services consumed by, or used on, patients. When an unlabeled use of a commercial product or an investigational use not yet approved for any purpose is discussed during an educational activity, the contributor should disclose that the product is not labeled for the use under discussion or that the product is still investigational.

ACCF is committed to providing its learners with high-quality activities and materials that promote improvements and quality in health care and not a specific proprietary business or commercial interest. The intent of this disclosure is not to prevent participation in educational activities by persons with a financial or other relationship, but rather to provide learners with information on which they can make their own determination whether financial interests or relationships may influence the education activity.

ACCF assesses conflicts of interest (COI) with its faculty, planners, managers, staff, and other individuals who are in a position to control the content of certified activities. All relevant potential conflicts of interest that are identified are thoroughly vetted by course directors, ACCF education staff, and members of the Accreditation Compliance Workgroup (ACWG) through a process that includes appropriate peer review for fair balance, scientific objectivity and validity, and patient care and safety recommendations.

## LEARNING OBJECTIVES:

- Discuss the role of the multi-disciplinary care team and the impact on quality cardiovascular patient care.
- Be familiar with current guidelines used in the diagnosis and management of revascularization, heart failure and chest pain.
- Discuss factors in selecting and using medications effectively in cardiovascular patients.
- Be able to identify and discuss a variety of patient care strategies, including pharmacologic, in the management of patients with various disease states and conditions.

THANK YOU TO OUR HOSPITAL SPONSORS

2022 HOSPITAL SPONSORS



---

**Heart & Vascular Center**

---



NATIONAL LEADERS IN MEDICINE

[www.MOACC.org](http://www.MOACC.org)



# REGISTRATION

## LOCATION

St. Charles Convention Center  
1 Convention Center Plaza  
St. Charles, MO 63303

## HOTEL INFORMATION

Embassy Suites St. Charles  
2 Convention Center Plaza  
St. Charles, MO 63303  
Phone 636-946-5544

Rate: \$189.00, Group Name: American College of  
Cardiology Missouri Chapter

## REGISTRATION/PAYMENT POLICY

Your full payment in advance completes your registration and ensures enrollment in this course. If you have not received an acknowledgment within two weeks of your registration submission, please contact us at (314) 416-2275. Opportunities for on-site registration are limited, and may be unavailable. To inquire about the ability to register on-site, please contact us at (314) 416-2275.

## TO REGISTER

Online: Secure online registration is available at [www.moacc.org](http://www.moacc.org)

## CANCELLATIONS

Course registration fee less \$25 administrative charge is refundable if cancellation is received in writing by October 21, 2022.

## SPECIAL NEEDS

The ACC Missouri Chapter fully complies with the legal requirements of the Americans with Disabilities Act rules and regulations thereof. If any participant of this meeting is in need of accommodations, please do not hesitate to submit written requests at least one month prior to the course date.

## FOR FURTHER COURSE INFORMATION

ACC Missouri Chapter, Beth Quick-Andrews, CAE  
P: (314) 416-2275 F: (314) 845-1891  
e-mail: [MOACC@qabs.com](mailto:MOACC@qabs.com)

---

First Name      Initial      Last Name      Degree

---

Address

---

City      State      Zip

---

Office Telephone Number      Fax

---

E-Mail Address

---

License #

## FEES

### ACC Members

\_\_\_\_\_ Physician: \$99      \_\_\_\_\_ CV Care Team Members: \$60

### Non ACC Members

\_\_\_\_\_ Physician: \$149      \_\_\_\_\_ CV Care Team Members: \$85

Fees include enrollment, continuing education credits, educational materials, continental breakfast, refreshment breaks, and lunch. If your hospital is sponsoring the meeting, please register with your complimentary meeting code:

### Cardiology Fellows may attend course at no charge.

Please email a letter from Fellowship Training Director indicating status as trainee to [moacc@qabs.com](mailto:moacc@qabs.com)

## PAYMENT INFORMATION

\_\_\_\_\_ Check Enclosed

(Circle One)    Mastercard      Visa    Discover

AmEx

Name on Card: \_\_\_\_\_

Card #: \_\_\_\_\_

Exp. Date: \_\_\_\_\_ Billing Zip Code: \_\_\_\_\_

Signature: \_\_\_\_\_

---