



MISSOURI  
CHAPTER

AMERICAN COLLEGE of CARDIOLOGY®

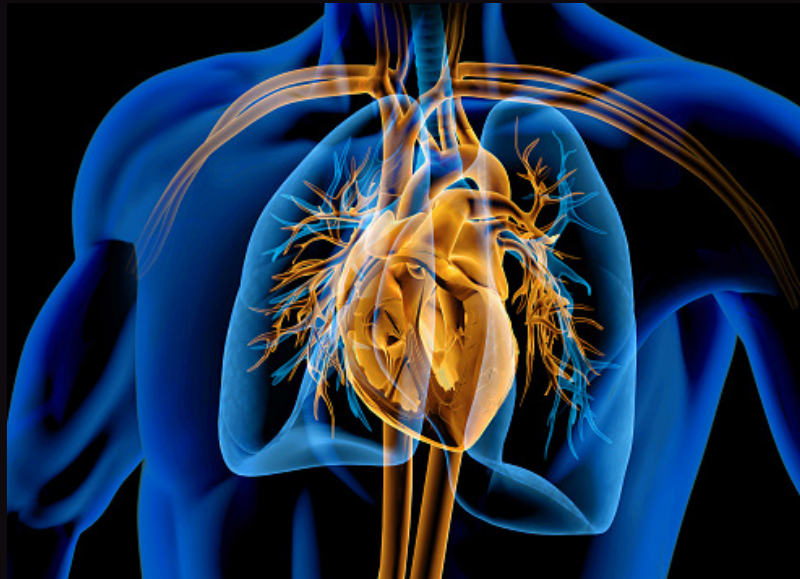


AMERICAN  
COLLEGE of  
CARDIOLOGY®

ANNUAL  
UPDATE IN CARDIOVASCULAR DISEASES  
SATURDAY, NOVEMBER 4, 2023  
COLUMBIA, MO  
EXHIBITOR AND MARKETING OPPORTUNITIES

EDUCATION GEARED TO THE ENTIRE CARDIOVASCULAR CARE TEAM

\_\_\_\_\_ AMA PRA CATEGORY I CREDIT(S)<sup>™</sup>, 5.25 ABIM MEDICAL KNOWLEDGE MOC POINTS (MOC),  
\_\_\_\_\_ CLINICAL NURSING EDUCATION CONTACT HOURS (CNE), \_\_\_\_\_ PHARMACOTHERAPEUTIC NURSING CONTACT HOURS  
(CNERx), 5.25 CONTACT HOURS OF THE ACCREDITATION COUNCIL FOR PHARMACY EDUCATION (CPE)



KEYNOTE & ACC UPDATE SPEAKER:

SANDRA LEWIS, M.D., FACC  
ACC BOARD OF TRUSTEES  
GOOD SMARITAN HEALTH SYSTEM  
PORTLAND, OREGON

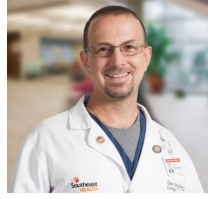
PROGRAM CHAIRS:  
TAISHI HIRAI, M.D., FACC  
VRINDA TRIVEDI, M.D., FACC

JOINTLY PROVIDED BY:  
THE AMERICAN COLLEGE OF CARDIOLOGY FOUNDATION  
AND THE MISSOURI CHAPTER OF THE AMERICAN COLLEGE  
OF CARDIOLOGY

# AN INVITATION TO OUR COLLEAGUES

## **Gabriel Soto, M.D., Ph.D., FACC, FHRS**

Missouri ACC Chapter President;  
Member, ACC Board of Governors;  
SoutheastHEALTH, Cape Girardeau, MO



## **Taishi Hirai, M.D., FACC**

Missouri ACC Council Member;  
Annual Scientific Session Program  
Chair;  
University of Missouri Columbia,  
Columbia, MO

## **Vrinda Trivedi, M.D., FACC**

Missouri ACC Council Member;  
Annual Scientific Session Program  
Vice Chair;  
University of Missouri Columbia,  
Columbia, MO



We are pleased to present the 2023 Missouri ACC Annual Update in Cardiovascular Diseases LIVE on November 4, 2023 in Columbia, MO. This meeting will showcase the wide breadth of cardiovascular medicine that is present throughout Missouri.

We will begin the day with an ACC Update from ACC Board of Trustees Member Sandra Lewis, M.D., FACC. Dr. Lewis will also deliver our keynote address discussing *Inequities in Healthcare*, followed by a special focus presentation focusing on *Evaluating the Effectiveness of Healthcare System in Caring for Vulnerable Populations* with Kenton Johnson, Ph.D., M.P.H.

Our morning session will feature *What is New with the Aortic Disease Atrial Fibrillation and, Hypertrophic Cardiomyopathy Guidelines?* We will round out the morning with a Debate Session on TAVR or SAVR for Low Risk Aortic Stenosis Patients.

The lunch will feature a spirited Fellows In Training Jeopardy Session with participants from training programs from across the state. In addition, Fellows in Training will participate in a Poster Competition.

The afternoon will feature four breakout session focused on a variety of topics including Cardio Obstetrics, Updates in Structural and Interventional Cardiology, Cardio-Oncology, and Heart Failure Therapy.

We ask that you support this very important and informative meeting.

## 2023 PLANNING COMMITTEE

### **Anastasia Armbruster, Pharm.D., FACC, BCPS**

Pharmacist Planner  
University of Health Sciences  
and Pharmacy, St. Louis, MO

### **Margaret Capriglione, M.S.N., ANP-BC**

Nurse Planner  
Barnes Jewish Hospital,  
St. Louis, MO

### **Sandeep Gautam, M.D., M.Ph., FACC, FHRS**

University of Missouri  
Columbia School of  
Medicine,  
Columbia, MO

### **Anna Grodzinsky, M.D., FACC**

Saint Luke's Mid-America  
Heart Institute, Kansas City,  
MO

### **Kunal Gurav, MD, FACC**

ChenMed, St. Louis, MO

### **Mustafa Husaini, M.D., M.B.A., FACC**

Washington University  
School of Medicine, St. Louis,  
MO

### **Josh Mitchell, M.D., FACC**

Washington University  
School of Medicine, St. Louis,  
MO

### **William Orr, M.D., FACC**

Washington University  
School of Medicine, St. Louis,  
MO

### **Sridevi Reddy Pitta, M.D., FACC**

University of Missouri School  
of Medicine, Columbia, MO

### **Lisa Roelle, M.S., PA-C**

Physician Assistant Planner  
Washington University  
School of Medicine, St. Louis,  
MO

### **Toniya Singh, M.D., FACC**

Saint Louis Heart and  
Vascular, St. Louis, MO

### **Gabriel Soto, M.D., Ph.D., FACC, FHRS**

Southeast HEALTH  
Cape Girardeau, MO

### **Vrinda Trivedi, M.D., FACC**

University of Missouri  
Columbia School of  
Medicine,  
Columbia, MO

### **Justin Vader, M.D., FACC**

Washington University  
School of Medicine, St. Louis,  
MO

### **Marion Ybarra, M.D., FACC**

Washington University  
School of Medicine, St. Louis,  
MO

# NOVEMBER 4, 2023 SCHEDULE

## Welcome and Opening Remarks

- 7:00 A.M. Registration and Networking Breakfast  
Visit with Exhibitors
- 8:00 A.M. Welcome
- 8:10 A.M. ACC Update
- 8:30 A.M. Missouri ACC Update

## SESSION I. Opening General Session

- 8:45 A.M. Keynote Address: Inequities in Healthcare
- 9:30 A.M. Special Focus Speaker
- 9:45 A.M. Refreshment Break & Exhibitor  
Networking, Visit Posters

## SESSION II. What is New in the Guidelines?

- 10:00 A.M. How Best to Apply Guidelines to Clinical Practice
- 10:10 A.M. Aortic Disease Guidelines
- 10:20 A.M. Atrial Fibrillation Guidelines
- 10:30 A.M. Hypertrophic Cardiomyopathy Guidelines
- 10:40 A.M. Refreshment Break & Exhibitor  
Networking  
Poster Judging

## DEBATE SESSION: TAVR or SAVR for Low-Risk Aortic Stenosis Patients

- 11:00 A.M. TAVR or SAVR for Low-Risk Aortic Stenosis Patients.

## Lunch & FIT Jeopardy

- 11:45 A.M. Lunch & Exhibitor Networking
- 12:15 P.M. FIT Jeopardy
- 12:55 P.M. Announce Poster Winners

## SPECIALTY SESSION I:

### Track 1: Updates in Interventional & Structural Cardiology

- 1:00 P.M. Multi-Vessel CAD and Heart Failure: Learnings from the REVIVED Trial
- 1:15 P.M. Update on TEE Imaging for Mitral and Tricuspid Procedures
- 1:30 P.M. Transcatheter Tricuspid Valve Interventions: TRILUMINATE Trial and More
- 1:50 P.M. Panel Discussion

### Track 2: Cardio-Obstetrics

- 2:00 P.M. POTS in Pregnancy
- 2:15 P.M. Genetic Testing in Cardiomyopathy
- 2:30 P.M. Risk Stratification Tools and Emerging Programs and Studies for MFM
- 2:45 P.M. Panel Discussion with

## SPECIALTY SESSION II:

### Track 1: Heart Failure Therapy-- Overcoming Inertia, Maximizing Therapy

- 1:00 P.M. Case Presentation
- 1:10 P.M. New Onset Heart Failure: Diagnosis and Initial Management
- 1:20 P.M. Managing Chronic Ambulatory Heart Failure: Optimal Therapy
- 1:30 P.M. Worsening Heart Failure: Decompensations and Decisions
- 1:45 P.M. Panel Discussion

### Track 2: Cardio-Oncology Challenges and Educational Pearls: A Case-Based Session

- 2:00 P.M. Cardio-Oncology in Adult Cancer Patients
- 2:20 P.M. Cardiac Amyloidosis
- 2:40 P.M. Cardio-Oncology in Childhood Cancer

## Closing Remarks

- 3:00 P.M.

## Women In Cardiology Meeting

- 3:15 P.M.

# EXHIBITOR AND NETWORKING OPPORTUNITIES

## INDUSTRY SUPPORT OPPORTUNITIES:

### Platinum-\$7,500:

- Table Top Exhibit Space in Prominent Location (8')
- One time use of the MO ACC Meeting Registration List
- Full page advertisement in Winter Newsletter
- Company Logo prominently displayed at the MO ACC Annual Meeting and on the Chapter website identifying you as a Platinum Supporter
- Scientific Session on-screen acknowledgement slide
- MO ACC Annual Meeting attendee mailing list
- Four company representatives may attend.

### Gold-\$5,000:

- One Table Top Exhibit Space (8')
- Company Logo prominently displayed at the MO ACC Annual Meeting and on the Chapter website identifying you as a Gold Supporter
- Scientific Session on-screen acknowledgement slide
- MO ACC Annual Meeting attendee mailing list
- Two company representatives may attend.
- One time use of the MO ACC Meeting Registration List
- Quarter page advertisement in Winter Newsletter

### Silver-\$3,000:

- One Table Top Exhibit Space (8')
- Company Logo prominently displayed at the MO ACC Annual Meeting and on the Chapter website identifying you as a Silver Supporter
- Scientific Session on-screen acknowledgement slide
- MO ACC Annual Meeting attendee mailing list
- One company representative may attend.

## HEALTH SYSTEM SPONSORSHIP:

### Platinum-\$7,500:

- All Clinical Staff (Physicians, APRNS, RNs, PAs, Pharm.D.s) receive complimentary meeting registration. A code will be provided to you.
- Table Top Exhibit Space in Prominent Location (8')
- One time use of the MO ACC Meeting Registration List
- Full page advertisement in Winter Newsletter
- Company Logo prominently displayed at the MO ACC Annual Meeting and on the Chapter website identifying you as a Platinum Supporter
- Scientific Session on-screen acknowledgement slide
- MO ACC Annual Meeting attendee mailing list
- Four company representatives may attend.

### Gold-\$5,000:

- All Clinical Staff (Physicians, APRNS, RNs, PAs, Pharm.D.s) receive complimentary meeting registration. A code will be provided to you.
- One Table Top Exhibit Space (8')
- Company Logo prominently displayed at the MO ACC Annual Meeting and on the Chapter website identifying you as a Gold Supporter
- Scientific Session on-screen acknowledgement slide
- MO ACC Annual Meeting attendee mailing list
- Two company representatives may attend.
- One time use of the MO ACC Meeting Registration List
- Quarter page advertisement in Winter Newsletter

### Silver-\$3,000:

- One Table Top Exhibit Space (8')
- Company Logo prominently displayed at the MO ACC Annual Meeting and on the Chapter website identifying you as a Silver Supporter
- Scientific Session on-screen acknowledgement slide
- MO ACC Annual Meeting attendee mailing list
- One company representative may attend.

# REGISTRATION

## CONTACT INFORMATION:

Name \_\_\_\_\_

Company \_\_\_\_\_

Address \_\_\_\_\_

City, State, Zip \_\_\_\_\_

Phone \_\_\_\_\_

Email \_\_\_\_\_

Website \_\_\_\_\_

## PARTICIPATION LEVEL:

\_\_\_\_ Platinum Booth Package – \$7,500

\_\_\_\_ Gold Booth Package – \$5,000

\_\_\_\_ Silver Booth Package – \$3,000

\_\_\_\_ Platinum Hospital Partner– \$7,500

\_\_\_\_ Gold Hospital Partner– \$5,000

\_\_\_\_ Silver Hospital Partner–\$3,000

Do you require Electricity?

\_\_\_\_yes \_\_\_\_no \_\_\_\_preferred, not required

## PAYMENT INFORMATION

Pre-payment by check or credit card is required

\_\_\_\_ Check Enclosed (Payable to Missouri ACC)

\_\_\_\_ Visa \_\_\_\_ MC \_\_\_\_ Discover \_\_\_\_ AMEX

Credit Card #: \_\_\_\_\_

Expiration Date: \_\_\_\_\_

Name on Card \_\_\_\_\_

Signature \_\_\_\_\_

Amount to Charge \_\_\_\_\_

Please complete and fax, mail or e-mail to:

Missouri ACC

2650 South Hanley Rd., Ste. 100

St. Louis, MO 63144

(314) 416-2275 phone (314) 845-1891 fax

moacc@qabs.com or www.moacc.org

MO-ACC Representative \_\_\_\_\_

Signature/Date \_\_\_\_\_

## ACCEPTANCE OF TERMS AND AGREEMENT:

**Cancellation Policy:** Fees paid to ACC Missouri for conference exhibition/marketing are non-refundable.

**Use of Space Restrictions:** No exhibitor shall permit any other corporation or firm, or its representatives, to use the space allotted to them, nor shall display articles not manufactured or sold normally by them. Co-participation by any other corporation or firm or its representatives in space assigned to the original applicant may do so only with written permission from ACC Missouri, and shall be subject to additional charges.

**Right of Refusal:** The ACC Missouri Chapter expressly reserves the right to refuse exhibit space, without notice of hearing to any applicant for exhibit space at any and all trade shows sponsored by the ACC Missouri chapter or at any and all trade shows occurring in conjunction with any other association.

**Exhibitor Set Up and Tear Down:** Exhibitors agree to comply with all policies and procedures including the instructed set-up and tear down times for exhibition area. Failure to set up during the designated hours gives ACC Missouri chapter sole discretion to offer or not offer an alternate set-up time without refund.

**CME Disclosure:** This exhibit is being held in conjunction with a CME activity which has been planned and implemented through the joint sponsorship of the American College of Cardiology Foundation and the American College of Cardiology, Missouri chapter in accordance with the Essential Areas and policies of the Accreditation Council for Continuing Medical Education (ACCME) and will follow these Conditions:

*Activity is for scientific and educational purposes only and will not promote the exhibitor's product, directly or indirectly; Accredited Provider is responsible for control and selection of presenters and moderators; Accredited Provider will ensure meaningful disclosure to the audience, at the time of the program, of (a) Exhibitor funding and (b) any relationship between the activity chairman, individual speakers or moderators and the Exhibitor.; There will be no "scripting", emphasis, or direction of content or policy of the Sponsor by the Exhibitor or its agents.; No promotional activities will be permitted in the same room or obligate path to the educational activity. No product advertisements will be permitted in the activity room.; Tuition fees, honoraria, or travel expenses for registrants will not be paid directly or indirectly by Exhibitor; Accredited Provider will make every effort to ensure that data regarding Exhibitor's products (or competing products) are objectively selected and presented. Accredited Provider will ensure, to the extent possible, meaningful disclosure of limitations on data, e.g., ongoing research, interim analyses, preliminary data, or unsupported opinion; Educational grants and promotional displays are to be separate transactions; The Exhibitor agrees to abide by all requirements of the ACCME Standards for Commercial Support of Continuing Medical Education; The Accredited Provider agrees to abide by the ACCME Standards for Commercial Support for Continuing Medical Education and to acknowledge educational support from the Exhibitor in seminar brochures, syllabi or other activity materials.*

**Exhibitor Agreement and Acceptance:** The signer of this agreement, or person designated above as the main company contact, shall be the company's official representative and shall have the authority to act on behalf of the company in all negotiations. The agreed upon Exhibition and Marketing Benefits are detailed in the enclosed prospectus. We agree to abide by the terms and conditions listed above and in the exhibiting prospectus, which are made part of this contract.

Printed Name \_\_\_\_\_

Title \_\_\_\_\_

Signature/Date \_\_\_\_\_